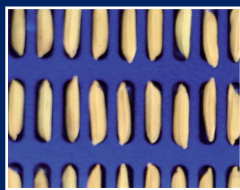


## Goal:

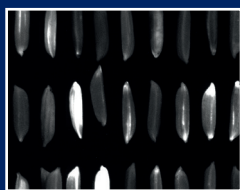
Sorting individual seeds on maturity, based on Chlorophyll content.

## Specifications:

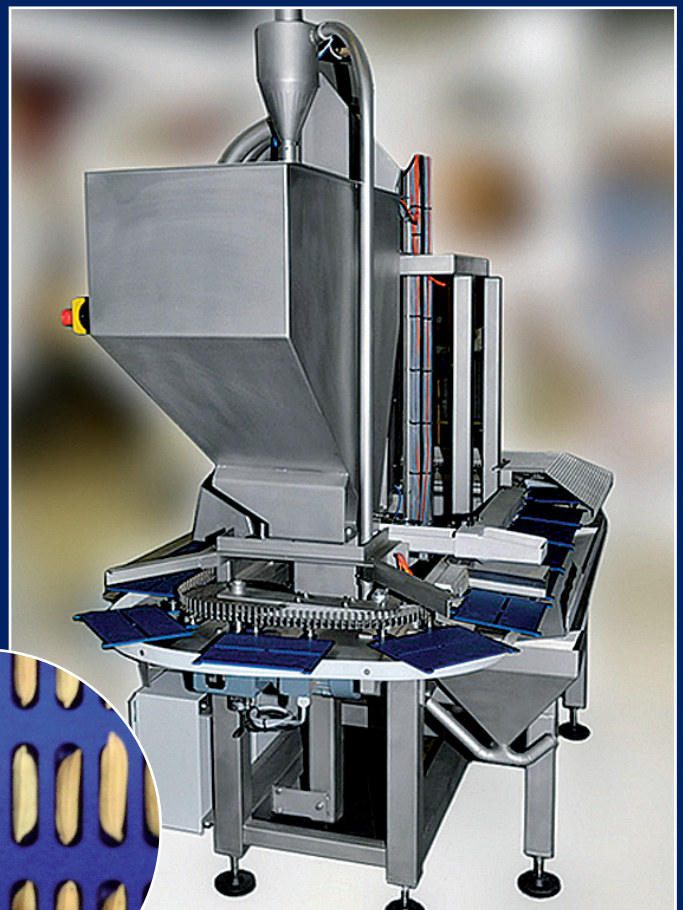
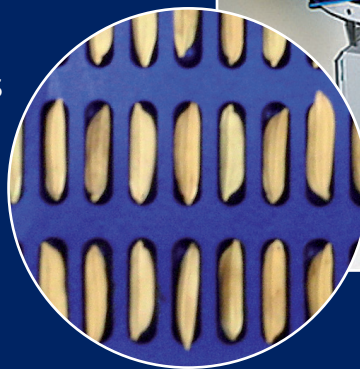
- Typical capacity: 200 seeds/s (pepper - fennel)
- Unmanned operation
- Easy tray exchange
- 3 Classes (accept, reject, return)



Rice without Chlorophyll analysis



Rice with Chlorophyll analysis



## Crops:

- |              |                        |
|--------------|------------------------|
| Vegetables   | Flower seeds           |
| Maize (corn) | Rice                   |
| Soy          | Other crops on request |

## Options:

- Additional classes
- Tray filling inspection
- Full electronic control